



# Agilent Genomic Workbench 7.0

## Installation Guide

Installing Agilent Genomic Workbench 7.0 in Windows [2](#)

Installing Agilent Genomic Workbench 7.0 on a Mac [11](#)

Backing up Your Data [16](#)

Uninstalling the Program [17](#)

Contacting Agilent Technical Support [19](#)

Agilent Genomic Workbench 7.0 is a comprehensive design and analysis tool for setting up and interpreting your microarray experiments. Unlike earlier releases of Agilent Genomic Workbench that offered two different editions (called Standard and Lite), Agilent Genomic Workbench 7.0 is a single software package that is similar to previous versions of the Lite Edition. This guide provides instructions for installing Agilent Genomic Workbench 7.0.



**Agilent Technologies**

# Installing Agilent Genomic Workbench 7.0 in Windows

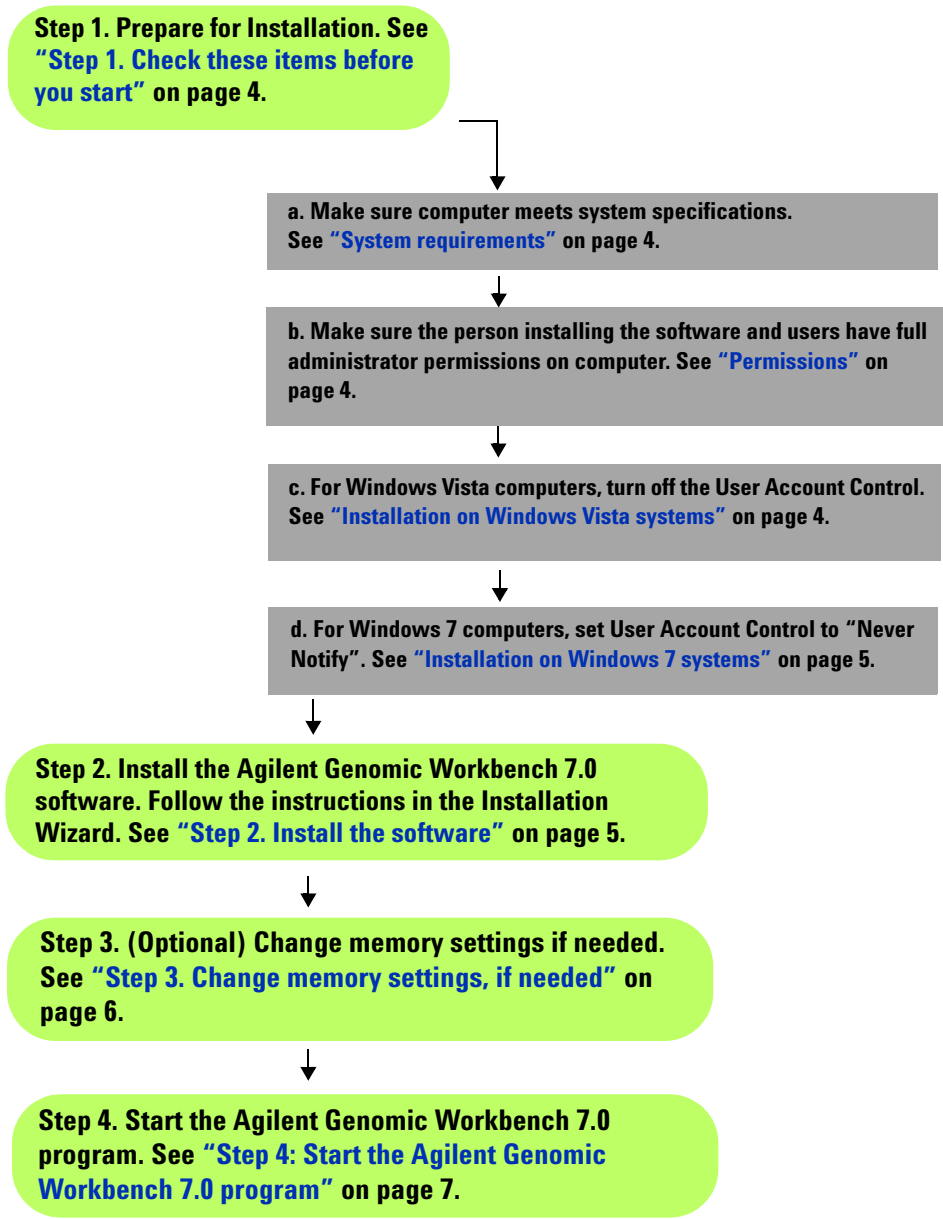
## Overview of steps for installing Agilent Genomic Workbench 7.0

To install Agilent Genomic Workbench 7.0, follow the steps shown in [Figure 1](#) on page 3. Details for each step are shown in the sections that follow.

## Note for Agilent Genomic Workbench 6.5 users

If you currently use Agilent Genomic Workbench 6.5 (Lite or Standard edition), you do not need to uninstall version 6.5 in order to install version 7.0. You can uninstall Agilent Genomic Workbench 6.5 after you install version 7.0, or you can leave Agilent Genomic Workbench 6.5 installed and run both versions.

To transfer your designs, experiments or filters from Agilent Genomic Workbench 6.5 to Agilent Genomic Workbench 7.0, export the content from version 6.5 and then import it into Agilent Genomic Workbench 7.0. Use the Import and Export buttons on the program's Home tab.



**Figure 1** Steps for installing Agilent Genomic Workbench 7.0

## Step 1. Check these items before you start

### System requirements

Check that your computer meets or exceeds the following requirements before you install Agilent Genomic Workbench 7.0.

**Table 1** System Requirements for Agilent Genomic Workbench 7.0

Operating System	Windows XP, Windows Vista, or Windows 7 32-bit or 64-bit  Linux (same requirements as 32-bit Windows)
Processor	2 GHz or greater, Intel Core 2 Duo CPU
Available memory (RAM)	<ul style="list-style-type: none"><li>• For 32-bit, 2 GB</li><li>• For 64-bit, 4 GB (more is required when working with 244K or higher microarrays)</li></ul>
Hard disk space	40 GB free space minimum
Display Resolution	1280 x768 minimum
Internet connectivity	T1 or T3 connection (1.5 Mbps) for use of eArray

### Permissions

Before you install the software, make sure that you have full administrator privileges for the location where you install the software.

### Installation on Windows Vista systems

Before you install the software on a Windows Vista system, make sure the User Account Control is turned off.

- 1 Open Control Panel.
- 2 Click **User Accounts**.
- 3 Click **User Accounts**.
- 4 Click **Turn User Account Control on or off**.
- 5 Under **Turn On User Account Control (UAC) to make your computer more secure** clear the check box.
- 6 Click **OK**.

## Installation on Windows 7 systems


For installations on Windows 7 computers, change the User Account Control settings from the default setting to 'Never Notify.'

- 1 Open the Control Panel.
- 2 Click **User Accounts**.
- 3 Click **User Accounts**.
- 4 Click **Change User Account Control setting**.
- 5 Change the setting to "Never Notify" and click **OK**.
- 6 Reboot the machine.

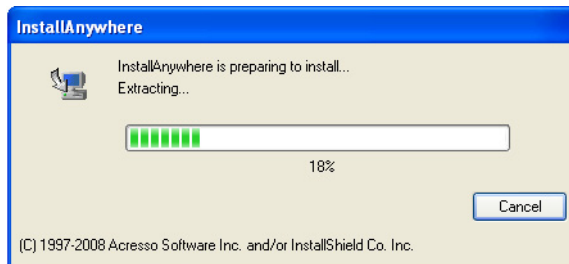
## Permissions

You must be a member of the Administrators group on the computer to install the software and have full permissions in the folder where you install and run the software. If you are unsure of your permissions, install the software in your Users folder. Ask your system administrator or visit the Microsoft Web site for information on setting permissions.

## Step 2. Install the software

To start the installation, double-click the installer .exe file you downloaded from the Agilent Web site. The file is identified by the following icon: 

A message is displayed while the installer is prepared.



When the Installation Wizard starts, read and make selections for each screen, then click **Next** to go to the next screen.

### Step 3. Change memory settings, if needed

If you want to maximize the speed of processing you can change the memory setting. The 32-bit machine JVM does not support over 1400MB.

#### To change memory settings for running workflows:

- 1 Using Notepad (or any text editor program), open the **config\_workflow.properties** file, located in the **config** folder of the program installation folder. By default, this location is **C:\Program Files\Agilent\Agilent Genomic Workbench <version>\config**.
- 2 Find the property, **HEAP\_SIZE=-Xmx1200m**.
- 3 Change “1200” to the desired memory setting. This value sets the amount of RAM (in MB) that is allocated to the program in Workflow mode.

**Example:** For a 32-bit machine with 2 GB RAM or higher, change the property to **HEAP\_SIZE=-Xmx1400m**. This is the maximum allowed for a 32-bit machine.

**Example:** For a 64-bit machine, to increase this setting to 3,000 MB (the maximum allowable setting if you have 4 GB RAM installed on your machine), change the property to: **HEAP\_SIZE=-Xmx3000m**.

#### To change memory settings for working interactively:

- 1 In Notepad (or any text editor program), open the **Agilent Genomic Workbench 7.0.y.lax** file, where “y” represents the build number of the installed software. This file is located in the program installation folder. By default, this location is **C:\Program Files\Agilent\Agilent Genomic Workbench <version>**.
- 2 Find the line “**lax.nl.java.option.additional=-Xms1024m -Xmx1400m -Xss2m -Dsun.java2d.noddraw=true**”.
- 3 Change “1024” to the desired memory setting. This value sets the amount of RAM (in MB) that is allocated to the program when you work interactively.

**Example:** For a 32-bit machine with 2 GB RAM or higher, change the line to read “**lax.nl.java.option.additional=-Xms1400m -Xmx1400m -Xss2m -Dsun.java2d.noddraw=true**”.

**Example:** For a 64-bit machine with 4 GB RAM, change the line to read  
"lax.nl.java.option.additional=-Xms3000m -Xmx3000m  
-Xss2m -Dsun.java2d.noddraw=true".

## Step 4: Start the Agilent Genomic Workbench 7.0 program

After you have installed Agilent Genomic Workbench 7.0 as described above, start the program as described below.

- 1 Double-click the Agilent Genomic Workbench <version> icon on your desktop or select **Agilent Genomic Workbench <version>** from the **Windows Start>All Programs>Agilent Genomic Workbench <version>** menu.

### NOTE

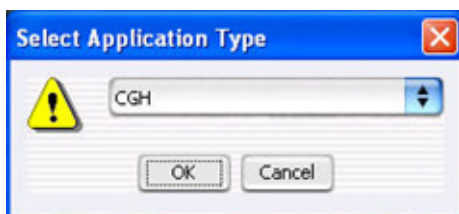
How you start the program depends on the choice you made for the Shortcut Folder during installation of the Agilent Genomic Workbench program. By default, the installer places the start icon in a new program group in the **Start>All Programs>Agilent Genomic Workbench <version>** menu. Depending on your selection, look for the program icon in another program group, or as an icon on your desktop.

### CAUTION

The icons for uninstalling the program and for starting the program look alike. Be careful not to select the uninstall icon by mistake.



- 2 If this is the first time you have opened Agilent Genomic Workbench after installation, you are presented with a license agreement. Read the license. Click **I have read all the terms and conditions** and then click **I agree** to proceed.
- 3 A License Error message appears because you have not yet entered any application license(s). Click **OK**.
- 4 You are asked to select an application type.

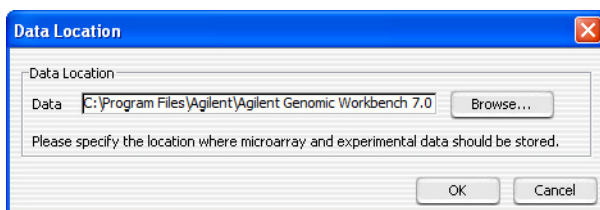


**Figure 2** Select Application Type dialog box

Select the application whose data you intend to display or analyze. – CGH, ChIP, CH3 (methylation), or SureSelect Target Enrichment.

- 5 Click **OK**. When you get an invalid license message, click **OK** to ignore it for now. You enter your license later.
- 6 An informational message appears that explains how to increase performance if you are working with 1M feature arrays. Use workflow mode, or increase the memory settings to increase performance, if necessary. See [Step 3. Change memory settings, if needed](#). To hide this box in the future, mark **Please do not show this warning again**.
- 7 Click **OK**.

The Data Location dialog box appears. You can select the location where you want the program to save program data.



**Figure 3** Data Location dialog box

- 8 To accept the default location shown for saving data, click **OK**.  
OR

To change the location for saving data, click **Browse**. Select a new location, click **Open**, then click **OK**.



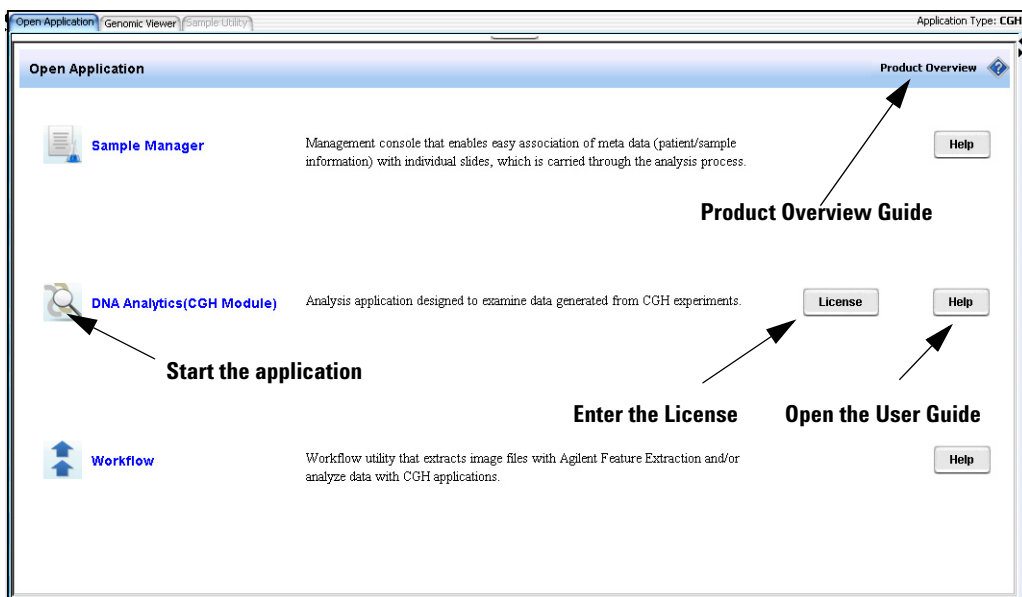
## NOTE

If you choose to save data in a location other than the default location, you must create the folder first, and assign full permissions to this folder.

## CAUTION

Do not select a location that contains a backup data folder; the current data overwrites the data in the selected folder. For information on how to back up data, see “[Back up your data](#)” on page 16.

The Open Application pane of the Agilent Genomic Workbench 7.0 main window appears.



**Figure 4** Open Application pane

## NOTE

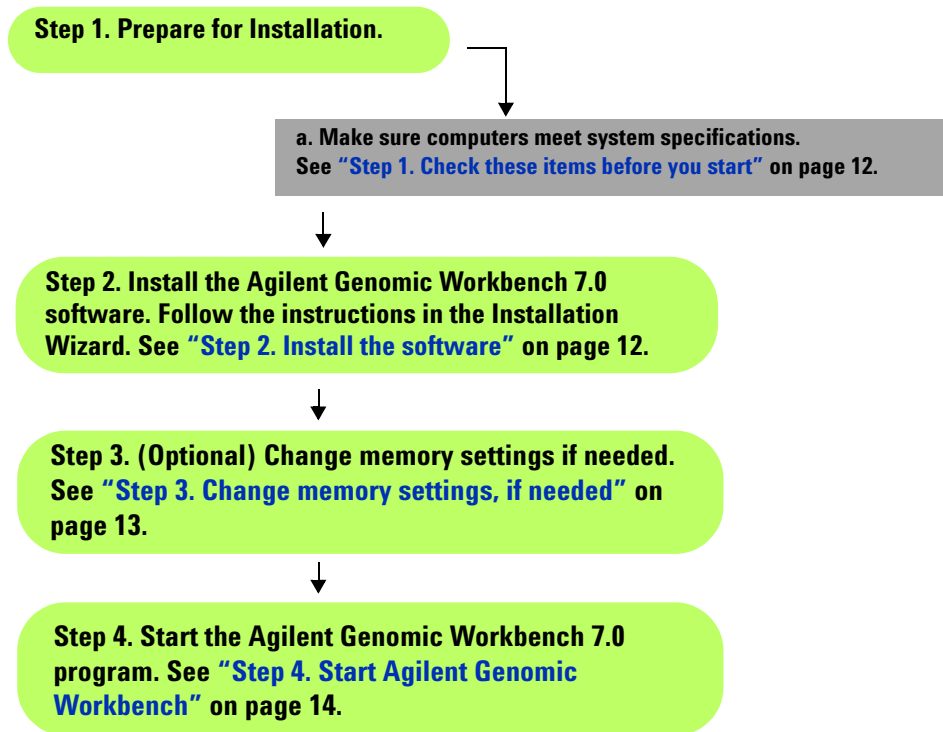
The Open Application pane contains different icons and programs, depending on what application is currently selected.

- 9 If your application requires a license click **License**. Follow the instructions in the application *User Guide* to enter its license information. To open the application *User Guide*, click **Help** next to the DNA Analytics License button.
- 10 Click **Product Overview** at the upper right corner of the Open Application window to open the *Product Overview Guide* in Adobe® Reader®. The *Product Overview Guide* contains general information about the features of each application in Agilent Genomic Workbench 7.0, and explains how to start each application and find help.
- 11 To open an application, click the icon to the left of the application name in the Open Application pane.

# Installing Agilent Genomic Workbench 7.0 on a Mac

## Installation Overview

To install Agilent Genomic Workbench 7.0 on a Mac, follow the steps shown in the following figure.



**Figure 5** Steps for installing Agilent Genomic Workbench 7.0 on a Mac


## Step 1. Check these items before you start

Before you install Agilent Genomic Workbench 7.0, make sure that your computer meets these system requirements:

**Table 2** Mac System Requirements for Agilent Genomic Workbench 7.0

Operating System	Mac OS X v10.5.x
Processor	3 GHz Intel Core 2 Duo CPU or better
Available memory (RAM)	4 GB
Hard disk space	40 GB (For analysis of large datasets, more space is required)
Display resolution	1280 x768 or higher
Internet connectivity	1 Mbps or faster

## Step 2. Install the software

- 1 The installation file you downloaded from the Agilent Web site is a .zip file. Extract the contents of the .zip file to a location on your hard drive.
- 2 To start the installation of the software from the installer program, double-click the installer icon . The installer program starts.

For each installer screen, read the information that appears, select options as needed, then click **Next** to go to the next screen.

### Step 3. Change memory settings, if needed


You can increase the amount of memory (RAM) that is allocated to Agilent Genomic Workbench. This can increase the speed of processing.

#### To change memory settings for Workflow mode

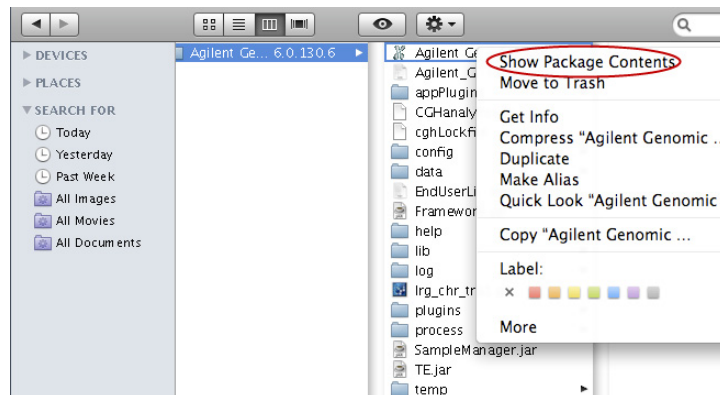
- 1 In TextEdit, open the file `config_workflow.properties`. This file is located in your Applications folder, in `/Agilent/Agilent Genomic Workbench <version>/config/`.
- 2 Find the property `HEAP_SIZE=-Xmx1200m`.
- 3 Change “1200” to your preferred memory setting. This value sets the amount of RAM (in MB) that is allocated to the program in Workflow mode.

**Example:** To increase this setting to 3,000 MB (the maximum allowable setting if you have 4 GB RAM installed on your machine), change the property to: `HEAP_SIZE=-Xmx3000m`

#### To change memory settings for working interactively

- 1 In your Applications folder, open the folder `/Agilent/Agilent Genomic Workbench <version>/`, then control-click the Agilent Genomic Workbench `<version>` program icon .

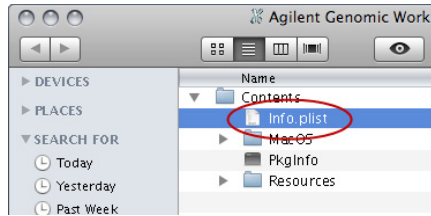
A menu appears.



- 2 Click **Show Package Contents**.

The Contents folder appears.

- 3 In the **Contents** folder, double-click the file **info.plist**.



The info.plist file opens in TextEdit.

- 4 In the file, find this property:

```
<key>lax.nl.java.option.additional </key>  
<string>-Xmx1400m -Xss2m</string>
```

- 5 In the second line of the property, change “1400” to your preferred memory setting. This value sets the amount of RAM (in MB) that is allocated to the program when you work interactively.

**Example:** To increase this setting to 3,000 MB (the maximum allowable setting if you have 4 GB RAM installed on your machine), change the property to:

```
<key>lax.nl.java.option.additional </key>  
<string>-Xmx3000m -Xss2m</string>
```

## Step 4. Start Agilent Genomic Workbench

After you install Agilent Genomic Workbench, you can start the program as described below.

- On your desktop, double-click the Agilent Genomic Workbench 7.0 icon




### NOTE

If this alias does not appear on your desktop, you may have selected a different location for the program alias. Go to this location, then double-click the alias. To start the program if the program icon is located in the dock, click it.

Alternatively, in your Applications folder, in /Agilent/Agilent Genomic Workbench <version>/, double-click **Agilent Genomic Workbench <version>**.

## CAUTION

Be careful not to click the uninstaller icon , which also appears in the Dock (or other installed location).

---

If this is the first time you have opened Agilent Genomic Workbench 7.0 after installation, several dialog boxes appear before you can use the program. For information about these dialog boxes, see [“Step 4: Start the Agilent Genomic Workbench 7.0 program”](#) on page 7. That section also shows you how to display the *Product Overview Guide*, which describes the main capabilities of the program, and how to open each specific application.

In addition, other sections of this installation guide are relevant to both Mac and Windows users of Agilent Genomic Workbench 7.0. Be sure to read:

- [“Backing up Your Data”](#) on page 16
- [“Uninstalling the Program”](#) on page 17
- [“Contacting Agilent Technical Support”](#) on page 19

## Backing up Your Data

### Back up your data

If you want to create a backup copy of your data in a secure location, or move your data from one computer to another, copy the data folder for your current installation to another folder accessible to the new system.

#### NOTE

You cannot copy the data folder from an installation of Agilent Genomic Workbench 6.5 (Lite or Standard edition) and use it with Agilent Genomic Workbench 7.0. You can, however, export designs, experiments, and filters from Agilent Genomic Workbench 6.5 and then import them into Agilent Genomic Workbench 7.0.

---

By default, the data is located at **C:\Program Files\Agilent\Agilent Genomic Workbench <version>\data**. However, you might have changed this location when you installed the software. (For Mac users, the default data location is in the Applications folder, in **Agilent/Agilent Genomic Workbench <version>/data/.**)

#### Locate your current data folder

- 1 From the Home tab, click **User Preferences**.
- 2 Click the **Miscellaneous** tab. The location of your data folder is displayed in Data Location.
- 3 After you have verified the location of your current data folder, click **Cancel** to close the dialog box.

#### Copy your data folder to a new location

- 1 Browse to the location of your current data folder.
- 2 Copy the entire data folder from the current location to a new location of your choice.



#### Restore your backup data into the data location folder

- To restore your backup data, you must copy the entire data folder from your backup folder to the data location for your program.



## Uninstalling the Program

When you uninstall the Agilent Genomic Workbench program, the data, registry items, and icons are removed. The original program installation folder is not removed.

- 1 If necessary, back up your current data. See [“Backing up Your Data”](#) on page 16 for instructions.
- 2 To use the uninstall program provided with Agilent Genomic Workbench, click the Uninstall Agilent Genomic Workbench <version> icon . The icon is located by default in the **Start>All Programs>Agilent Genomic Workbench <version>** menu. (For Mac users, the default location for the uninstaller icon  is on the desktop.) Look for the icon in the location you selected when you installed the program; for example, on your desktop.

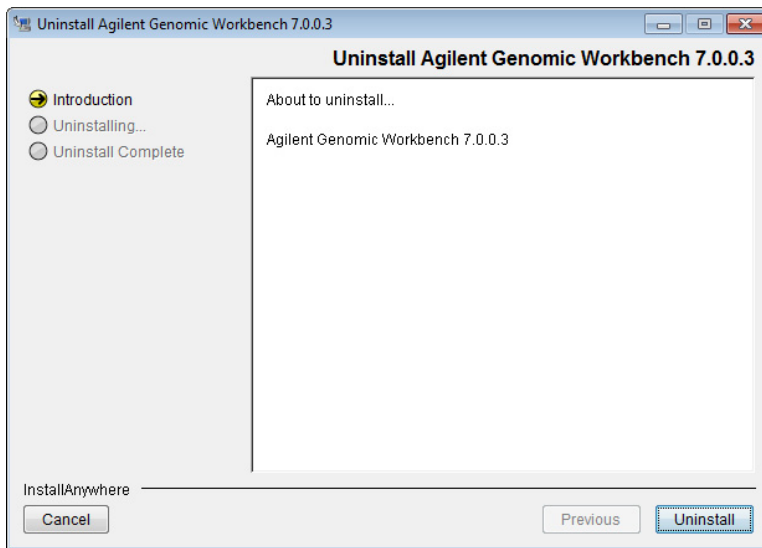
### NOTE

The icons for uninstalling the program and for starting the program look alike. Be careful not to select the start icon by mistake.



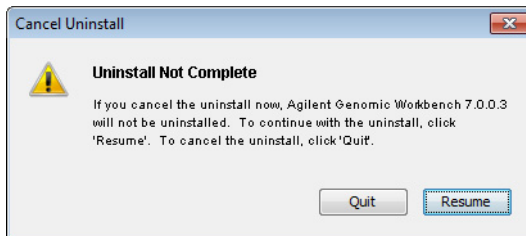
---

The Uninstall Wizard starts.



**Figure 6** Uninstall Wizard

- 3 If you want to cancel the uninstallation, click **Cancel** *before* you click **Uninstall**. A dialog box appears to confirm that you want to cancel the uninstallation. To abort the uninstallation, click **Quit**. To continue with the uninstallation, click **Resume**.



**Figure 7** Cancel Uninstall dialog box

- 4 When the Uninstall Wizard starts, click **Uninstall** to start the removal of the program.
- 5 When the uninstallation is finished, click **Done**.

## Contacting Agilent Technical Support

Technical support is available by phone and/or e-mail. A variety of useful information is also available on the Agilent Technical Support Web site.

<b>Resource</b>	<b>To find technical support contact information</b>
Agilent Technical Support Web site	<ol style="list-style-type: none"><li>1 Go to <a href="http://chem.agilent.com">http://chem.agilent.com</a>.</li><li>2 Select a country or area.</li><li>3 Under Quick Links, select <b>Technical Support</b>.</li><li>4 Select from the available links to display support information.</li></ol>
Contact Agilent Technical Support by telephone or e-mail (United States and Canada)	Telephone: (800-227-9770) E-mail: <a href="mailto:informatics_support@agilent.com">informatics_support@agilent.com</a>
Contact Agilent Technical Support by telephone or e-mail (for your country)	<ol style="list-style-type: none"><li>1 Go to <a href="http://chem.agilent.com">http://chem.agilent.com</a>.</li><li>2 Select <b>Contact Us</b>.</li><li>3 Under Worldwide Sales and Support Phone Assistance, click to select a country, and then click <b>Go</b>. Complete e-mail and telephone contact information for your country is displayed.</li></ol>

## To learn about Agilent products and services

To display information about the Life Sciences and Chemical Analysis products and services that are available from Agilent, go to [www.chem.agilent.com](http://www.chem.agilent.com).

[www.agilent.com](http://www.agilent.com)

## In this book

This book tells you how to install Agilent Genomic Workbench 7.0 on your computer.

© Agilent Technologies, Inc. 2012

Revision A, April 2012



G3800-90046

